

## Peaco Support Industrial Linear Actuators Catalog

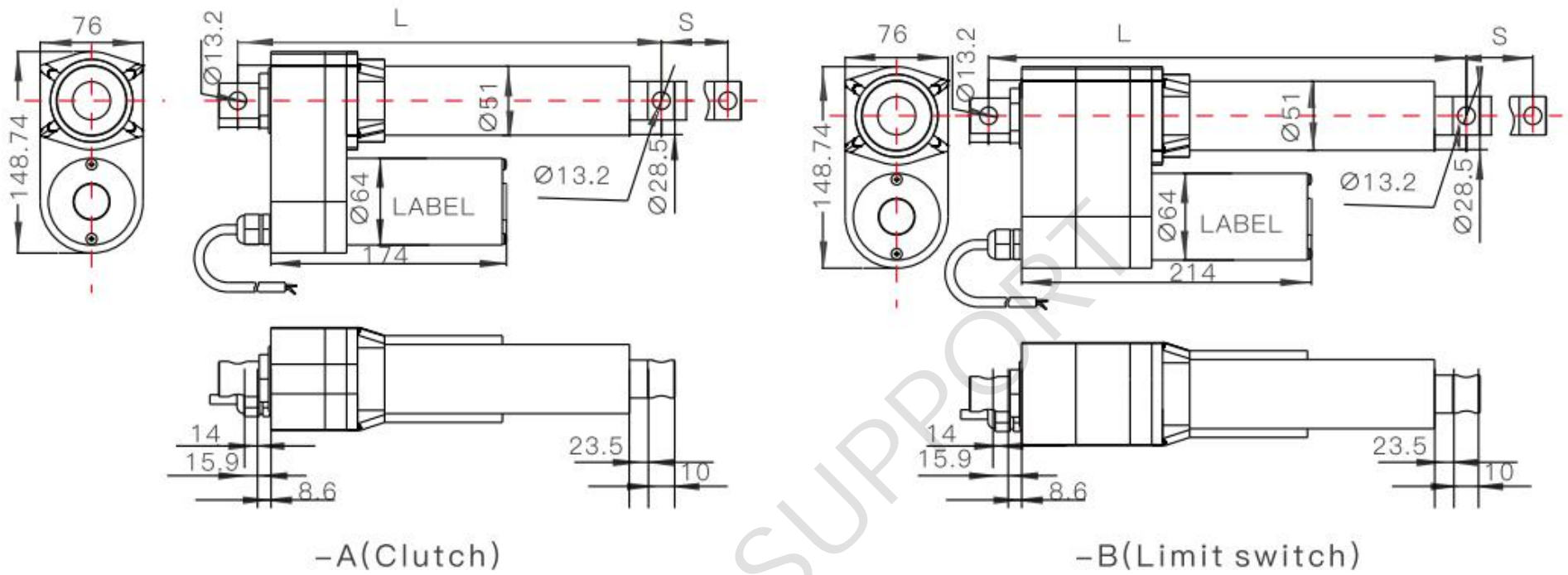


### Content

PEACO-HTW10A/HTW10B Series Linear Actuators	2
PEACO-HTW71 Series Linear Actuators	4
PEACO-HTW76 Series Linear Actuators	6
PEACO-HTW79 Series Linear Actuators	8
PEACO-HTW82 Series Linear Actuators	10
PEACO-HTW35 Series Linear Actuators	11

**PEACO-HTW10A/HTW10B Series Linear Actuators**

Standard Dimension (mm)



S: Stroke L: Retracted Length= Stroke + 135mm

**General Features**

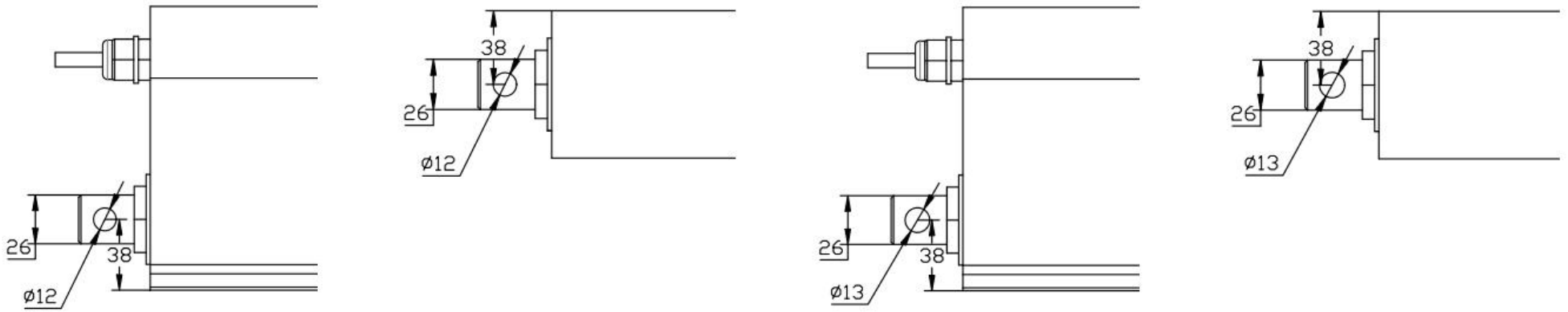
Model	PEACO-HTW10A/HTW10B
Voltage	12V DC, 24V DC, 36V DC, 48V DC
Max. Load	7000N
The Fastest Speed in Full Load	5mm/s (Load 7000N)
Minimum Installation Size	S+200mm (with clutch)
	S+240mm (with built-in limit switch)
Stroke	100-800mm (> 800mm is also available)
Lateral Torque	200Nm
Noise	≤60DB
Working Temperature Range	-45°C-+75°C
Signal Output (Optional)*	Hall sensor
Limit Switch	Built-in limit switch (not adjustable)
Certification	ISO9001-2008, CE, ROHS

**PEACO-HTW10A/HTW10B Model Selection --- Load and Speed (Motor Voltage: 24V DC)**

Code	Rated Load		Self Locking Force (Under the Condition of Push)	Rated Load Current	Output Velocity No- load (24V DC)	Full Load of Rated Load (24V DC)
	Push	Pull				
A	7000N	7000N	9000N	16.2A	5.5 mm/s	4.0 mm/s
B	6000N	6000N	6000N	16.2A	8.5 mm/s	7.0 mm/s
C	5000N	5000N	5000N	16.8A	11.0 mm/s	9.5 mm/s
D	4000N	4000N	3000N	16.8A	17.0 mm/s	14.0 mm/s

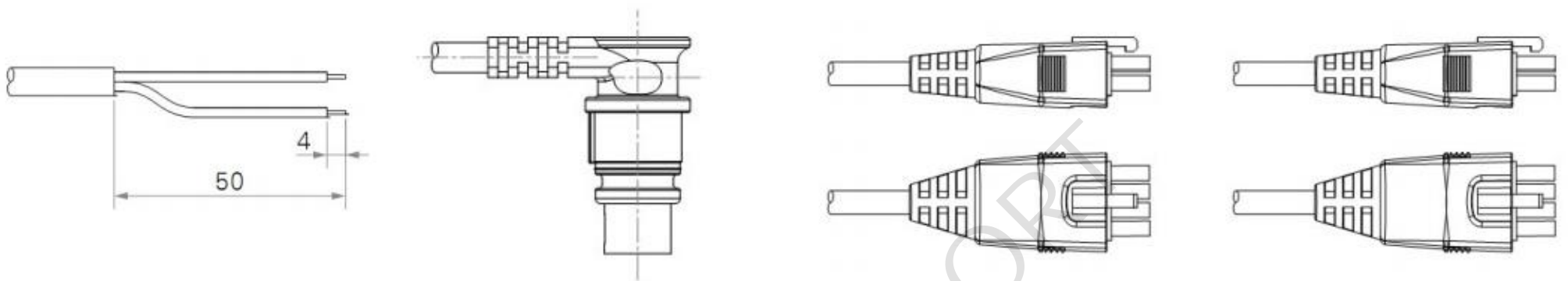
**Rear Attachment (Optional)**

1=0° bore diameter 12 mm, 2=90° bore diameter 12 mm, 3=0° bore diameter 13 mm, 4=90° bore diameter 13 mm



**Plug/ Socket Types (Optional)**

1=bare wire, 2=4 pin curved plug, 3=4 pin straight plug



**Front Attachment (Optional)**

- 1=General type, bore diameter 13.5mm
- 2=General type, bore diameter 16.5mm
- 3=U type, slot width 10, slot depth 24, bore diameter 13.5mm
- 4=U type, slot width 10, slot depth 24, bore diameter 16.5mm
- 5=Joint bearing, bore diameter 12mm, Model GS12
- 6=Joint bearing, bore diameter 16mm, Model GS16

Signal Output: N=No signal output, H=Hall sensor, P=Potentiometer

Line Length: 1-600mm, 2-1000mm, 3-1500mm, 4-Customized

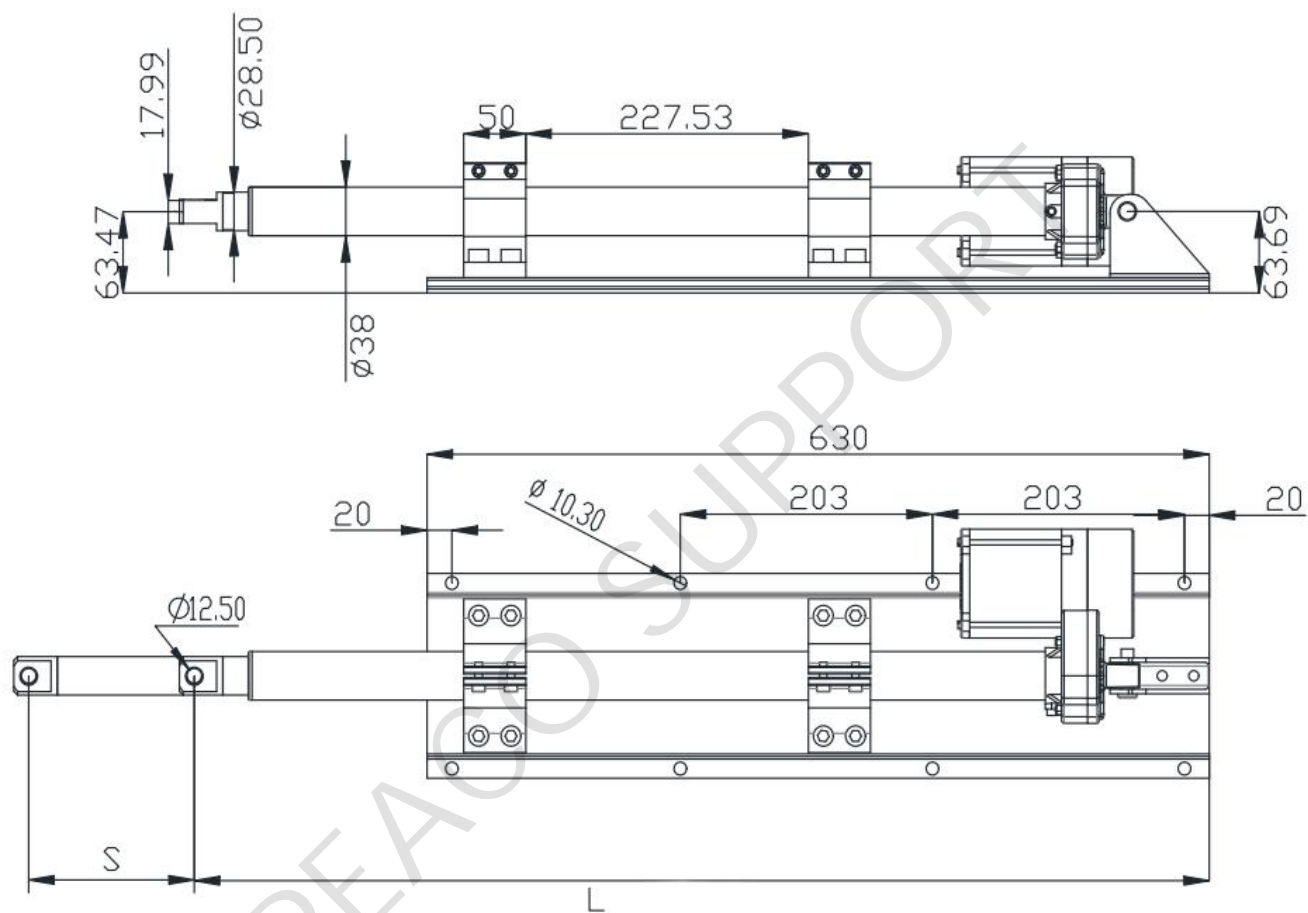
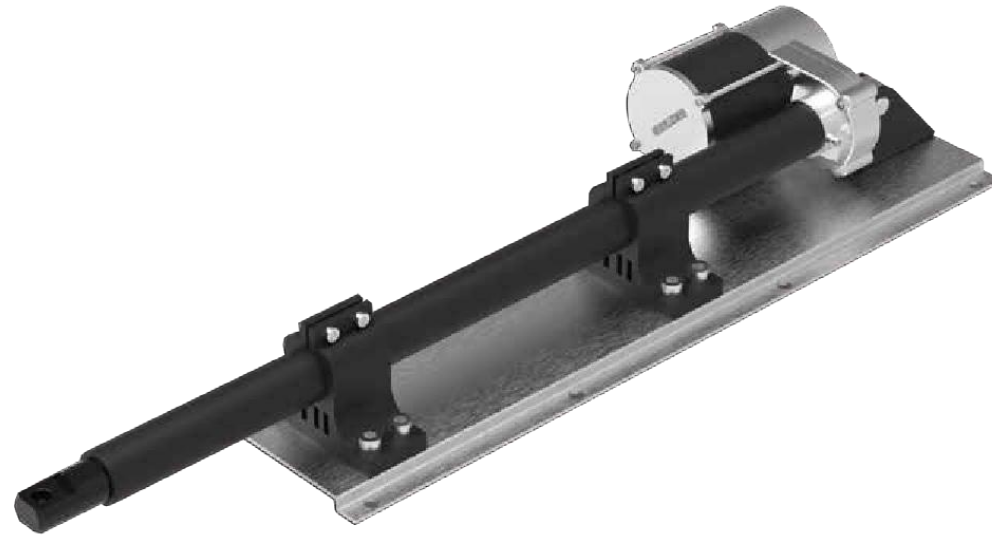
**Please select your suitable model like this below, for example:**

- Voltage: 12V DC
- Speed: 5mm/s
- Stroke: 100mm
- Normal installation stroke 100mm+250mm
- Load: 7000N
- Rear Attachment: 1=0° bore diameter 12 mm
- Plug type: 1=bare wire
- Front Attachment: general type, bore diameter 13.5mm
- Code A. No signal output. 1=600mm line length.

Then your selected code is: PEACO-HTW10A-12-5-100-350/450-7000-1-1-1-A-N-1

**PEACO-HTW71 Series Linear Actuators**

Standard Dimension (mm)



S: Stroke L: Retracted Length= Stroke + 135mm

**General Features**

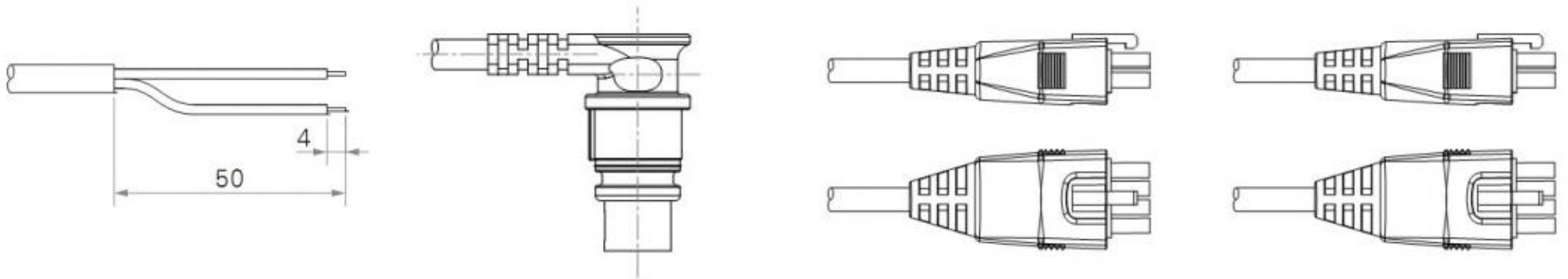
Model	PEACO-HTW71
Voltage	12V DC, 220V AC
Max. Load	6000N
The Fastest Speed in Full Load	5-10 mm/s
Minimum Installation Size	S+210mm Adjustable
Lateral Torque	100Nm
Noise	55DB
Working Temperature Range	-25°C-+65°C, +5°C-+45°C
Signal Output (Optional)*	10K potentiometer
Limit Switch	Built-in limit switch (not adjustable)
Protection Grade	IP 54
Eccentric Load	Max. 1000N, 500mm
Load Speed	3mm/s, 4mm/s, 8mm/s
Stroke	100-800mm (>800mm is also available)
Installation Method	Fixing on the upper and lower mounting plates by screws.
Overload Protection	It needs to be designed in a complete set of controllers
Frequency	10%, Maximum 2 minutes of continuous work.
Tube Material	Aluminum tube
Certification	ISO9001-2008

**PEACO-HTW71 Model Selection --- Load and Speed (Motor Voltage: 24V DC)**

Code	Rated Load		Self Locking Force (Under the Condition of Push)	Rated Load Current	Output Velocity No- load (24V DC)	Full Load of Rated Load (24V DC)
	Push	Pull				
A	6000N	6000N	8000N	3.6A	5.6 mm/s	5.0 mm/s

**Plug/ Socket Types (Optional)**

1=bare wire, 2=4 pin curved plug, 3=4 pin straight plug, 4=6 pin straight plug



Signal Output: N=No signal output, P=Potentiometer  
Line Length: 1-600mm, 2-1000mm, 3-1500mm, 4-Customized

**Please select your suitable model like this below, for example:**

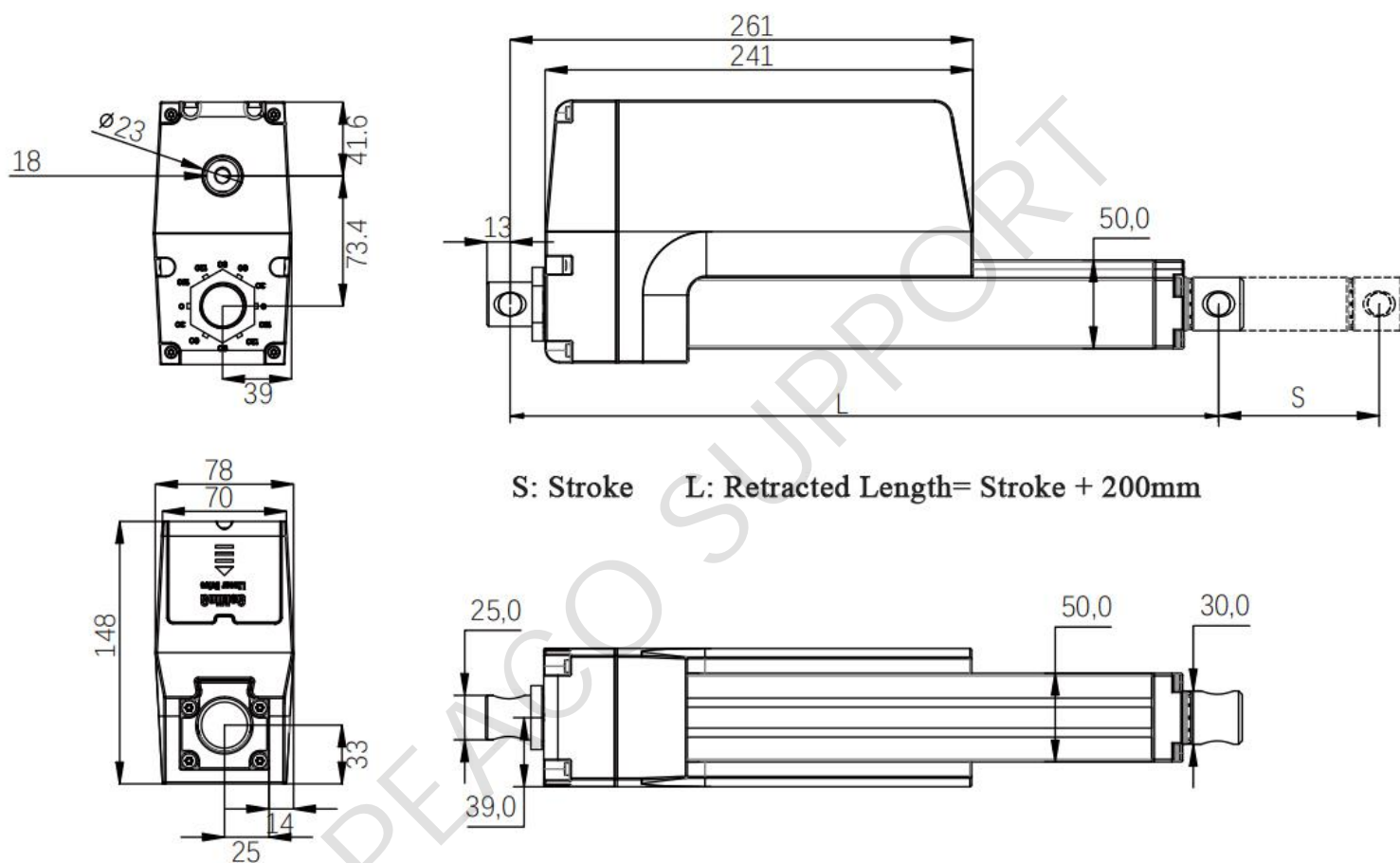
- Voltage: 24V DC
- Speed: 5mm/s
- Stroke: 600mm
- Normal installation stroke 100mm+135mm
- Load: 6000N
- Plug type: 1=bare wire
- Code A. No signal output. 1=600mm line length.

Then your selected code is: PEACO-HTW71-24-5-600-790/1390-6000-1-A-N-1

PEACO SUPPORT

**PEACO-HTW76 Series Linear Actuators**

Standard Dimension (mm)



**General Features**

Model	PEACO-HTW76
Voltage	12V DC, 24V DC, 36V DC, 48V DC or 110V AC, 220V AC
Max. Load	16000N
The Fastest Speed in Full Load	5mm/s (Load 16000N)
Minimum Installation Size	S+200mm (with clutch) S+250mm (with built-in limit switch)
Lateral Torque	200Nm
Noise	≤60DB
Working Temperature Range	-35°C-+75°C
Signal Output (Optional)*	Hall sensor
Limit Switch	Built-in limit switch (not adjustable)
Certification	ISO9001-2008

**PEACO-HTW76 Model Selection --- Load and Speed (Motor Voltage: 24V DC)**

Code	Rated Load		Self Locking Force (Under the Condition of Push)	Rated Load Current	Output Velocity No-load (24V DC)	Full Load of Rated Load (24V DC)
	Push	Pull				
A	16000N	16000N	25000N	19A	6.5 mm/s	4.9 mm/s
B	13000N	13000N	13000N	19A	9.5 mm/s	7.8 mm/s
C	10000N	10000N	10000N	19A	18 mm/s	14 mm/s
D	4600N	4600N	4600N	16A	28 mm/s	23 mm/s

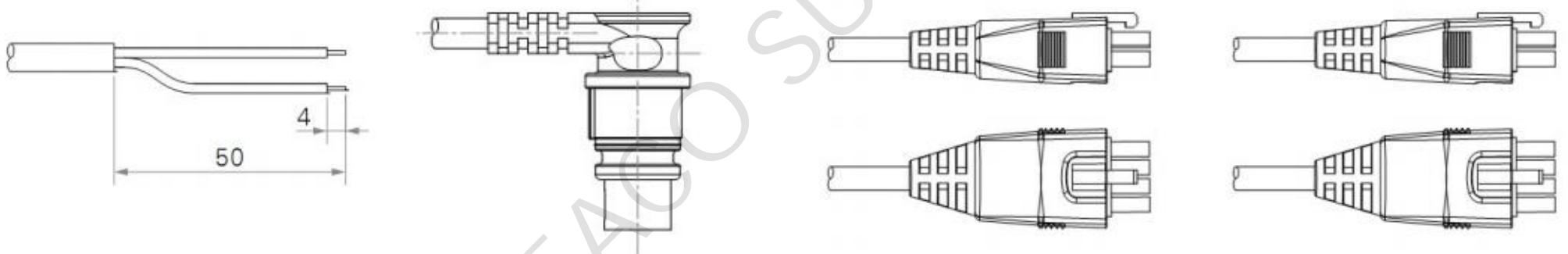
**Front Attachment (Optional)**

- 1=No slot, bore diameter 10mm
- 2=No slot, bore diameter 12mm
- 3=U type, slot width 6.0, slot depth 16.0, bore diameter 10.0mm
- 4=U type, slot width 6.0, slot depth 16.0, bore diameter 12.0mm
- 5=A type, slot width 6.0, slot depth 16.0, bore diameter 10.5mm



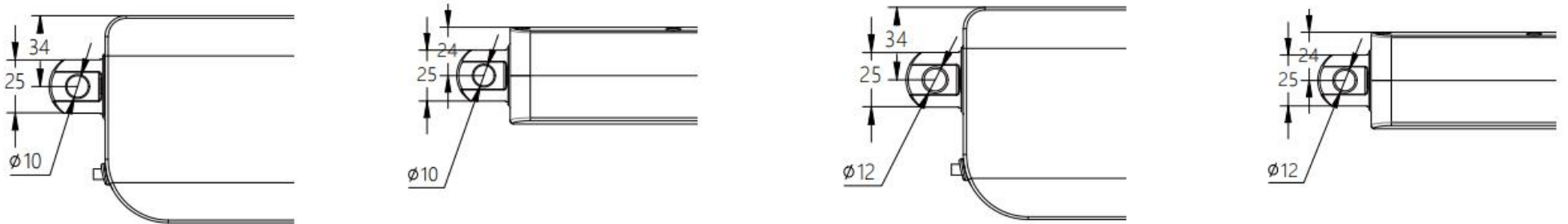
**Plug/ Socket Types (Optional)**

- 1=bare wire, 2=4 pin curved plug, 3=4 pin straight plug, 4=6 pin straight plug



**Rear Attachment (Optional)**

- 1=0° bore diameter 10 mm, 2=90° bore diameter 10 mm, 3=0° bore diameter 12 mm, 4=90° bore diameter 12 mm



Signal Output: N=No signal output, H=Hall sensor, P=Potentiometer

Line Length: 1-600mm, 2-1000mm, 3-1500mm, 4-Customized

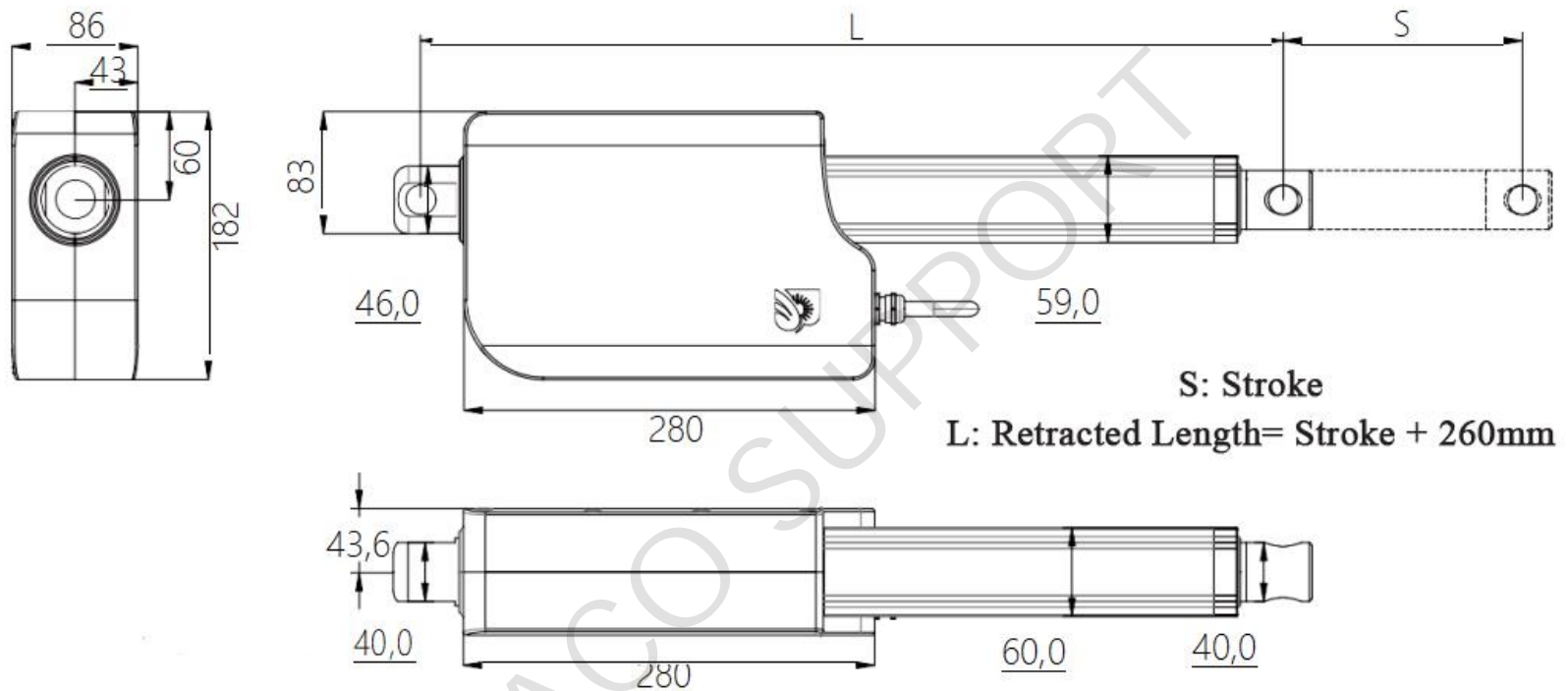
**Please select your suitable model like this below, for example:**

- Voltage: 12V DC
- Speed: 5mm/s
- Stroke: 100mm
- Normal installation stroke 100mm+200mm
- Load: 16000N
- Front Attachment: 1=No slot, bore diameter 10mm
- Plug type: 1=bare wire
- Rear Attachment: 1=0° bore diameter 10 mm
- Code A. No signal output. 1=600mm line length.

Then your selected code is: PEACO-HTW76-12-5-100-300/400-16000-1-1-1-A-N-1

**PEACO-HTW79 Series Linear Actuators**

Standard Dimension (mm)



**General Features**

Model	PEACO-HTW79
Voltage	12V DC, 24V DC, 36V DC, 48V DC or 110V AC, 220V AC
Max. Load	26000N
The Fastest Speed in Full Load	4mm/s (Load 26000N)
Minimum Installation Size	S+260mm S+300mm (S>400mm)
Lateral Torque	250Nm
Noise	≤60DB
Working Temperature Range	-35°C-+75°C
Signal Output (Optional)*	Hall sensor
Limit Switch	Built-in limit switch (not adjustable)
Device	Clutch device, limit switch device
Certification	ISO9001-2008

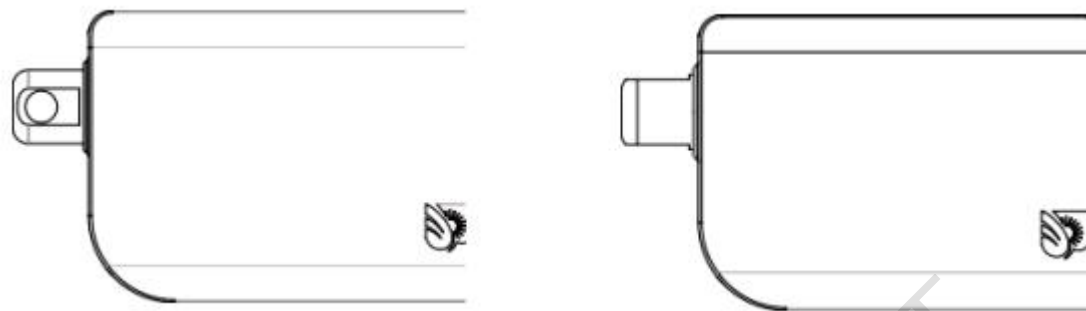


**PEACO-HTW79 Model Selection --- Load and Speed (Motor Voltage: 24V DC)**

Code	Rated Load		Self Locking Force (Under the Condition of Push)	Rated Load Current	Output Velocity No-load (24V DC)	Full Load of Rated Load (24V DC)
	Push	Pull				
A	26,000N	26,000N	35,000N	13A	4.6 mm/s	4.1 mm/s
B	18,000N	18,000N	18,000N	13A	9.5 mm/s	7.8 mm/s
C	12,000N	12,000N	12,000N	12A	13.8 mm/s	10.5 mm/s
D	8,000N	8,000N	10,000N	12A	27 mm/s	23 mm/s

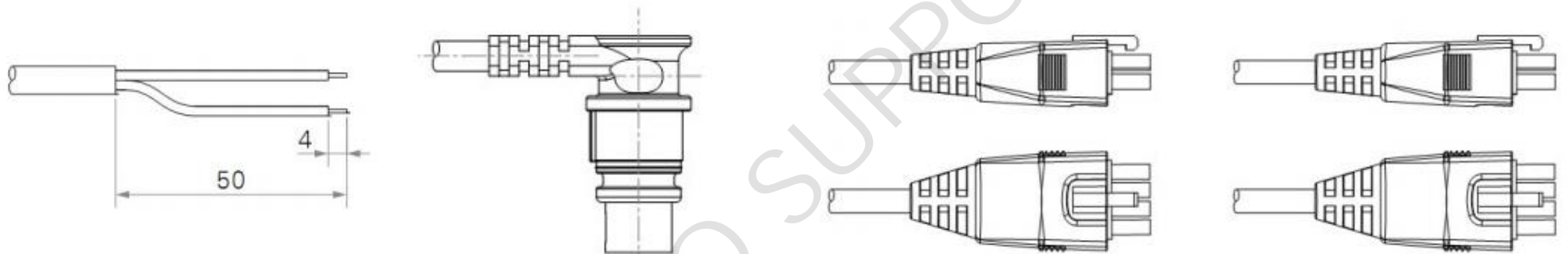
**Extension Forms**

1=0° , 2=9°



**Plug/ Socket Types (Optional)**

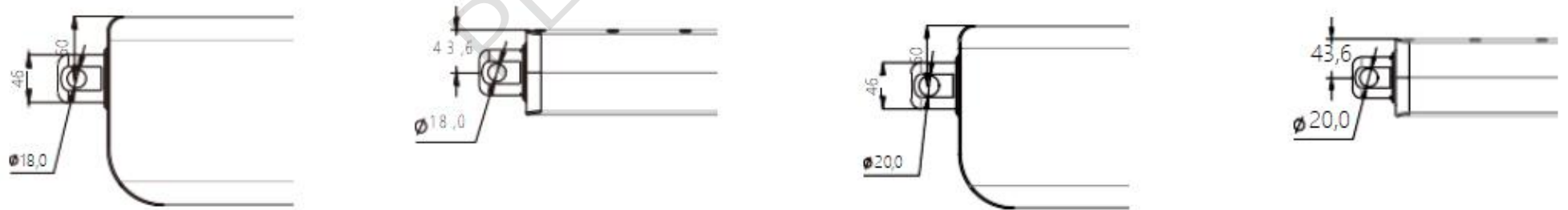
1=bare wire, 2=4 pin curved plug, 3=4 pin straight plug, 4=6 pin straight plug



**The Bottom Angle**

1=0° bore diameter 18 mm, 2=90° bore diameter 18 mm, 3=0° bore diameter 20 mm, 4=90° bore diameter 20 mm.

General type, bore diameter 10.5mm.



Signal Output: N=No signal output, H=Hall sensor, P=Potentiometer

Line Length: 1-600mm, 2-1000mm, 3-1500mm, 4-Customized

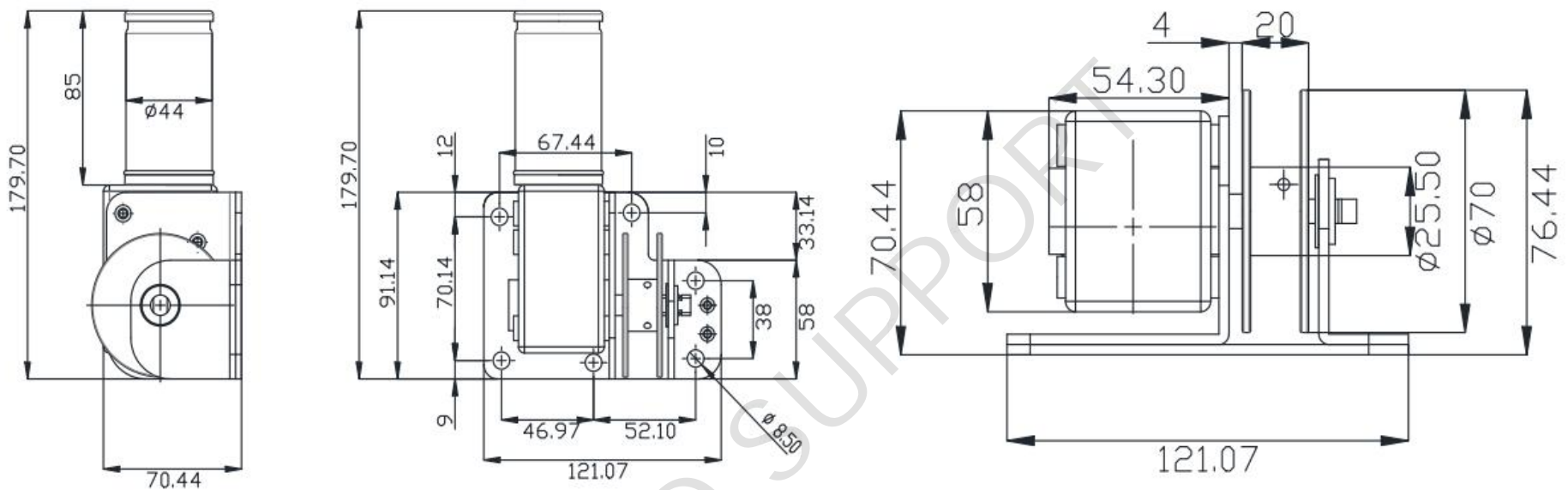
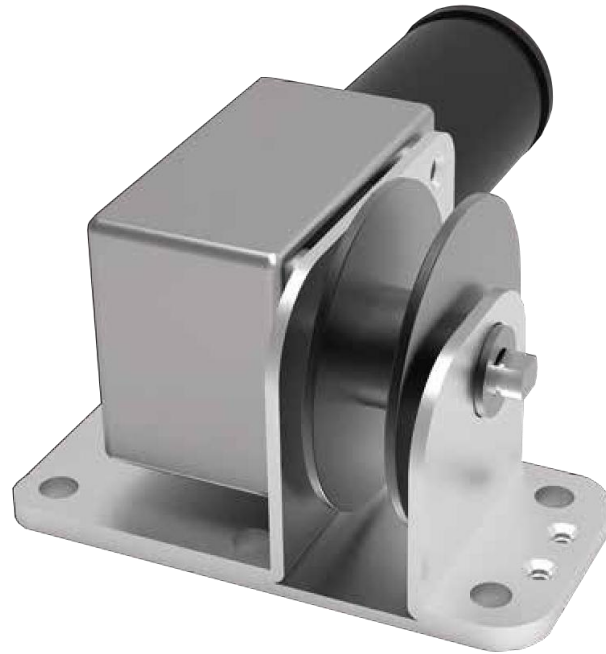
**Please select your suitable model like this below, for example:**

- Voltage: 12V DC
- Speed: 5mm/s
- Stroke: 100mm
- Normal installation stroke 100mm+200mm
- Load: 16,000N
- Plug type: 1=bare wire
- Code A. No signal output. 1=600mm line length.

Then your selected code is: PEACO-HTW79-12-5-100-300/400-16,000-1-A-N-1

**PEACO-HTW82 Series Linear Actuators**

Standard Dimension (mm)



**General Features**

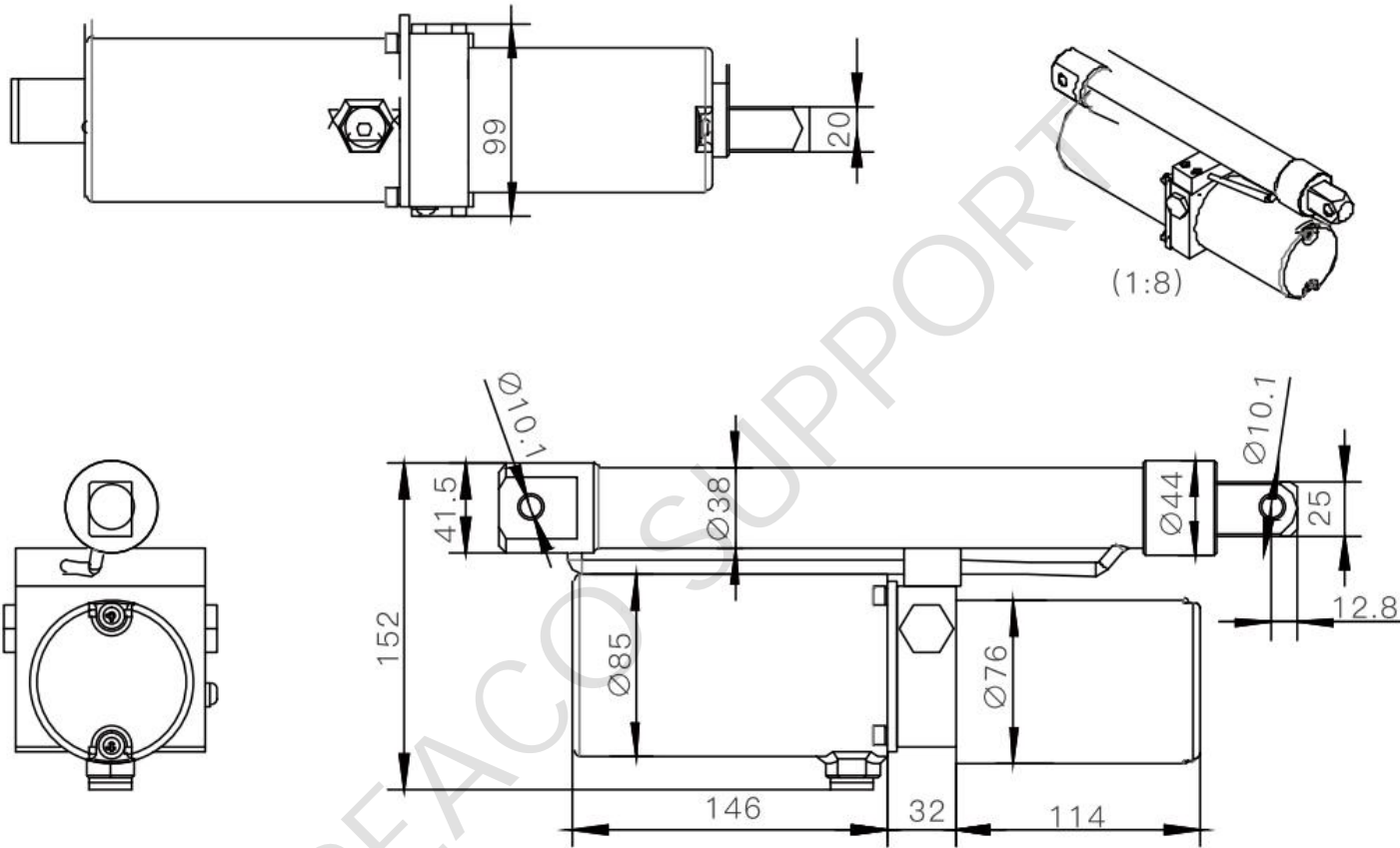
Model	PEACO-HTW82
Voltage	12V DC, 24V DC
Max. Load	80Kgf.cm
The Fastest Speed in Full Load	5-10 rpm/min
Minimum Installation Size	Φ 70mm (Customizable)
Radial Moment	≤5kgf
Axial Moment	≤5kgf
Working Temperature Range	-35°C-+75°C, +5°C-+45°C
Noise	62DB
Protection Grade	IP 65
Radial Clearance	≤0.1 mm
Axial Clearance	≤0.5 mm
Output Bearing Type	Ball bearing
Installation Method	Fixing on the upper and lower mounting plates by screws.
Features	High-strength alloy galvanized alloy gearbox and shell, all gear hobbing finishing.
Overload Protection	It needs to be designed in a complete set of controllers.
Frequency	10%, Maximum 2 minutes of continuous work.
Tube Material	Aluminum tube
Certification	ISO9001-2008, CE, RoHS

**PEACO-HTW82 Model Selection**

- Control mode: Steel wire chain.
- No signal output.
- Customizable plug.
- Line length: 1=straight line\*300mm, 2=straight line\*600mm, 3=straight line\*1000mm, 4=custom-made.

**PEACO-HTW35 Series Linear Actuators**

Standard Dimension (mm)



**General Features**

Model	PEACO-HTW35
Working Voltage	12V DC
Working Current	15A
Max. Load	25,000N
Stroke	200mm
Max. Height	100mm (Customized)
Working Pressure	130MPa
Flow	0.4L/min
Net Weight	4kg
Motor Power	DC 12V, 100W brushed motor
Motor Model	PEACO-HTQ350
Tank Capacity	0.5L
Suitable for Temperature	-20°C-+120°C
Material	Iron
Rated Pressure	15MPa
Suitable for Medium	Hydraulic oil
Pipe Size	10mm
Type	Hydraulic control system
Rated Flow Rate	1L
Nominal Pressure	12MPa
Motor Speed	2500r/min
Oil Pump Flow Rate	300ml/min
Rise and Fall Speed	6mm/s
Motor Power	0.08kW

**PEACO-HTW35 Model Selection**

- Control mode: 0=No over-current protector, 1=Overflow protector.
- No signal output.
- Customizable plug.
- Line length: 1=straight line\*300mm, 2=straight line\*600mm, 3=straight line\*1000mm, 4=custom-made.