

PEACO-P-MVE

Peaco Support P-MVE series of three phase asynchronous horizontal vibration motors with size 10-50 frame adopts aluminum alloy shell, size 50-90 frame adopts high-strength thick cast iron shell, which greatly reduces the weight of the host and increases the host's ability to handle materials. Featuring remarkable characteristics of high insulation level and protection level, small size and light weight. NSK and SKF bearings are used in the three-phase vibrating motors to extend its service life. The features are shown below.

1. The vibration frequency of this series of three-phase vibration motors can be regulated in a wide range by adjusting the speed and the vibration frequency and amplitude can be optionally selected according to different purposes in industrial field.
2. P-MVE horizontal vibration motors can be combined with multiple machines, which can realize self-synchronization and can complete different process requirements.
3. Such horizontal vibration motors can change the exciting force direction according to the installation methods of the vibration motor.
4. Users can only need to adjust the included angle of the eccentric block in the P-MVE 3-phase vibration motors so that the exciting force and amplitude can be adjusted steplessly.
5. Peaco Support offers customers a complete range of specifications of the P-MVE three-phase asynchronous horizontal vibration motors, which can meet all the working needs of various vibration machinery.

The three phase asynchronous horizontal vibration motors are used to vibrate the walls of silos, hoppers and chutes and are the excitation source of various vibration machinery, such as, linear vibrating screens, vibrating feeders and vibrating conveyors. It is also used to achieve powder, granular, block and other bulk materials, is ideal excitation source for mechanized screening, conveying, crushing, filling and anti-clogging. Such horizontal vibration motors are widely applicable in metallurgy, mining, coal, building materials, electric power, chemicals, food processing, metallurgy, casting, light industry, medicine and other industries.



(Dimension A-N Unit: mm)

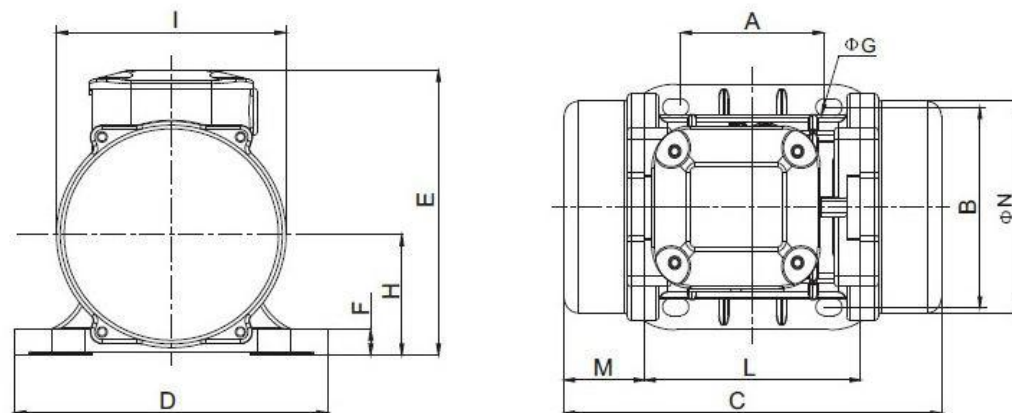


Fig A

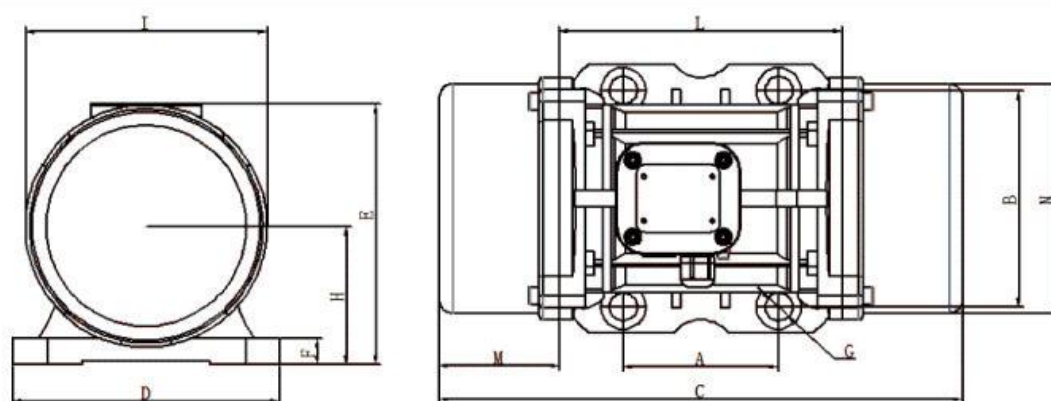


Fig B

3 Phase 2 Pole

Type	Force		Speed rpm	Power kw	Current A	A	B	C	D	E	F	ΦG	H	I	L	M	N	Cable Gland	Weight kg	Size	Fig
	kg	kN																			
MVE60/3	71	0.7	3000	0.03	0.16	62-74	106	211	130	136	12	9	48	94	121	45	86	M16*1.5	4.2	SIZE10	A
MVE100/3	99	1	3000	0.04	0.19	62-74	106	221	130	136	12	9	48	94	121	50	86	M16*1.5	4.6	SIZE10	A
MVE200/3	198	2	3000	0.09	0.35	62-74	106	231	131	159	15	9	64	121	123	54	112	M20*1.5	6.8	SIZE20	A
MVE300/3	311	3	3000	0.16	0.52	90	125	253	155	175	15	13	79	142	163	45	131	M20*1.5	9.8	SIZE30	B
MVE400/3	400	4	3000	0.2	0.58	90	125	273	155	175	15	13	79	142	163	55	131	M20*1.5	10.3	SIZE30	B
MVE500/3	516	5	3000	0.37	0.96	105	140	334	168	196	22	13	92	169	178	78	158	M20*1.5	15.8	SIZE40	B
MVE700/3	750	7	3000	0.45	1.25	105	140	334	168	196	22	13	92	169	178	78	158	M20*1.5	16.5	SIZE40	B
MVE800/3	788	8	3000	0.55	1.45	120	170	321	208	210	22	17	94	180	205	58	170	M20*1.5	20.6	SIZE50	B
MVE1200/3	1018	10	3000	0.75	1.85	120	170	321	208	210	22	17	94	180	205	58	170	M20*1.5	21.6	SIZE50	B
MVE1300/3	1386	13	3000	1.1	2.44	120	170	321	208	210	22	17	94	180	205	58	170	M20*1.5	24.5	SIZE50	B
MVE1600/3	1571	16	3000	1.25	2.94	140	190	416	229	262	30	17	120	247	220	80	222	M25*1.5	51.6	SIZE60	B
MVE1800/3	1848	18	3000	1.5	3.75	140	190	416	229	262	30	17	120	247	220	80	222	M25*1.5	52	SIZE60	B
MVE2000/3	2033	20	3000	2	4.07	140	190	416	229	262	30	17	120	247	220	80	222	M25*1.5	51.8	SIZE60	B
MVE2200/3	2206	22	3000	2	4.07	140	190	416	229	262	30	17	120	247	220	80	222	M25*1.5	52.8	SIZE60	B
MVE2300/3	2310	23	3000	2	4.44	140	190	416	229	262	30	17	120	247	220	80	222	M25*1.5	53.6	SIZE60	B
MVE3200/3	3250	32	3000	2.2	5.3	155	255	538	302	318	35	25	147	295	273	115	264	M32*1.5	96.9	SIZE75	B
MVE4000/3	4030	40	3000	2.3	5.3	155	255	538	302	318	35	25	147	295	273	115	264	M32*1.5	107	SIZE75	B
MVE5000/3	5070	50	3000	3.5	7.22	155	255	588	302	318	35	25	147	295	273	140	264	M32*1.5	11.2	SIZE75	B
MVE6500/3	6500	65	3000	4.2	8.2	200	320	605	378	411	49	28	200	421	325	120	378	M32*1.5	228.4	SIZE85	B
MVE9000/3	9030	90	3000	7.2	17.8	200	320	605	378	411	49	28	200	421	325	120	378	M32*1.5	240.3	SIZE85	B

3 Phase 4 Pole

Type	Force		Speed rpm	Power kw	Current A	A	B	C	D	E	F	ΦG	H	I	L	M	N	Cable Gland	Weight kg	Size	Fig
	kg	kN																			
MVE40/15	32	0.3	1500	0.03	0.26	62-74	106	221	130	136	12	9	48	94	121	50	86	M16*1.5	4.6	SIZE10	A
MVE90/15	90	0.9	1500	0.04	0.31	62-74	106	231	131	159	15	9	64	121	123	54	112	M20*1.5	7.4	SIZE20	A
MVE200/15	183	2	1500	0.06	0.49	90	125	273	154	175	15	13	79	142	163	70	131	M20*1.5	11.8	SIZE30	B
MVE250/15	257	2.5	1500	0.07	0.54	90	125	303	154	175	15	13	79	142	163	70	131	M20*1.5	13.2	SIZE30	B
MVE300/15	305	3	1500	0.08	0.62	90	125	303	156	175	15	13	79	142	163	70	131	M20*1.5	16.5	SIZE30	B
MVE400/15	388	4	1500	0.15	0.84	105	140	334	168	196	22	13	92	169	178	78	158	M20*1.5	19.5	SIZE40	B
MVE500/15	518	5	1500	0.25	1.06	105	140	334	168	196	22	13	92	169	178	78	158	M20*1.5	21	SIZE40	B
MVE700/15	693	7	1500	0.37	1.32	120	170	391	208	210	22	17	94	180	205	93	170	M20*1.5	27.4	SIZE50	B
MVE800/15	807	8	1500	0.4	1.36	120	170	391	208	210	22	17	94	180	205	93	170	M20*1.5	28.3	SIZE50	B
MVE1100/15	1045	11	1500	0.4	1.4	120	170	451	208	210	22	17	94	180	205	123	170	M20*1.5	35.8	SIZE50	B
MVE1400/15	1406	14	1500	0.45	1.78	140	190	448	229	262	30	17	120	247	220	96	222	M25*1.5	59.8	SIZE60	B
MVE1700/15	1757	17	1500	0.75	2.09	140	190	448	229	262	30	17	120	247	220	96	222	M25*1.5	61.8	SIZE60	B
MVE2400/15	2420	24	1500	1	3.2	140	190	514	229	262	30	17	120	247	220	129	222	M25*1.5	68	SIZE60	B
MVE2500/15	2500	25	1500	1.2	3.4	155	225	522	272	295	40	22	141	267	250	123	235	M25*1.5	90	SIZE70	B
MVE3000/15	3065	30	1500	1.5	3.68	155	225	522	272	295	40	22	141	267	250	123	235	M25*1.5	97.5	SIZE70	B
MVE3800/15	3830	38	1500	1.72	4.15	155	225	588	302	318	35	23.5	147	295	273	140	264	M32*1.5	130.4	SIZE75	B
MVE4300/15	4312	43	1500	1.94	4.5	155	225	588	302	318	35	23.5	147	295	273	140	264	M32*1.5	134.4	SIZE75	B
MVE5500/15	5576	55	1500	2.2	6.5	180	280	603	332	360	37	26	168	345	304	130	310	M32*1.5	192.2	SIZE80	B
MVE7200/15	7188	72	1500	3	9.6	200	320	608	378	411	49	28	200	424	325	120	378	M32*1.5	253	SIZE85	B
MVE9000/15	8984	90	1500	5.8	13.4	200	320	608	378	411	49	28	200	424	325	120	378	M32*1.5	268.6	SIZE85	B

3 Phase 6 Pole

Type	Force		Speed rpm	Power kw	Current A	A	B	C	D	E	F	ΦG	H	I	L	M	N	Cable Gland	Weight kg	Size	Fig
	kg	kN																			
MVE50/1	51	0.5	1000	0.03	0.38	90	125	273	154	175	15	13	79	142	163	55	131	M20*1.5	10.4	SIZE30	B
MVE100/1	105	1	1000	0.04	0.42	90	125	303	154	175	15	13	79	142	163	70	131	M20*1.5	12.2	SIZE30	B
MVE200/1	185	1.8	1000	0.05	0.48	105	140	334	168	196	22	13	92	169	178	78	158	M20*1.5	19.6	SIZE40	B
MVE300/1	308	3	1000	0.16	0.67	120	170	391	208	210	22	17	94	180	205	93	170	M20*1.5	26.6	SIZE50	B
MVE400/1	408	4	1000	0.25	0.78	120	170	451	208	210	22	17	94	180	205	123	170	M20*1.5	30.5	SIZE50	B
MVE500/1	510	5	1000	0.37	1.22	120	170	451	208	210	22	17	94	180	205	123	170	M20*1.5	34	SIZE50	B
MVE800/1	781	7.8	1000	0.45	1.26	140	190	448	229	262	30	17	120	247	220	96	222	M25*1.5	61.8	SIZE60	B
MVE1100/1	1067	11	1000	0.55	1.42	140	190	514	229	262	30	17	120	247	220	129	222	M25*1.5	79.4	SIZE60	B
MVE1400/1	1378	14	1000	0.7	1.95	140	190	562	229	262	30	17	120	247	220	154	222	M25*1.5	81.7	SIZE60	B
MVE1500/1	1500	15	1000	0.7	2	140	190	562	229	262	30	17	120	247	220	154	222	M25*1.5	83.6	SIZE60	B
MVE1600/1	1600	16	1000	0.75	2.06	140	190	562	229	262	30	17	120	247	220	154	222	M25*1.5	85.4	SIZE60	B
MVE1620/1	1622	16	1000	0.75	2.06	155	225	556	272	295	40	22	141	267	250	140	235	M25*1.5	99.8	SIZE70	B
MVE2100/1	2026	21	1000	1.1	2.88	155	225	590	272	295	40	22	141	267	250	170	235	M25*1.5	114.3	SIZE70	B
MVE2600/1	2573	26	1000	1.5	3.63	155	255	708	302	318	35	23.5	147	295	273	200	264	M32*1.5	148.6	SIZE75	B
MVE3000/1	2931	30	1000	1.7	4.17	155	255	708	302	318	350	23.5	147	295	273	200	264	M32*1.5	155.4	SIZE75	B
MVE3800/1	3835	38	1000	2	4.67	180	280	683	332	360	37	26	168	345	304	170	310	M32*1.5	215.6	SIZE80	B
MVE4700/1	4721	47	1000	2.35	6.01	180	280	733	332	360	37	26	168	345	304	195	310	M32*1.5	230.8	SIZE80	B
MVE5200/1	5193	52	1000	2.6	6.92	200	320	688	378	411	49	28	200	424	325	160	378	M32*1.5	279.8	SIZE85	B
MVE6500/1	6491	65	1000	2.9	7.76	200	320	688	378	411	49	28	200	424	325	160	378	M32*1.5	304.4	SIZE85	B
MVE8000/1	8018	80	1000	4.5	12.6	200	320	788	378	411	49	28	200	424	325	210	378	M32*1.5	325.2	SIZE85	B
MVE9000/1	8936	90	1000	5	13.2	200	320	788	378	411	49	28	200	424	325	210	378	M32*1.5	337.8	SIZE85	B

3 Phase 8 Pole

Type	Force		Speed rpm	Power kw	Current A	A	B	C	D	E	F	ΦG	H	I	L	M	N	Cable Gland	Weight kg	Size	Fig
	kg	kN																			
MVE150/075	105	1	750	0.08	0.38	105	140	334	168	196	22	13	92	169	178	78	158	M20*1.5	21.4	SIZE40	B
MVE250/075	180	2	750	0.12	0.67	120	170	390	208	210	22	17	94	180	205	93	170	M20*1.5	29.5	SIZE50	B
MVE400/075	264	2.5	750	0.12	0.73	120	170	451	208	210	22	17	94	160	205	123	170	M20*1.5	35	SIZE50	B
MVE650/075	431	4.5	750	0.2	0.96	140	190	448	229	262	30	17	120	247	220	96	222	M25*1.5	64.7	SIZE60	B
MVE900/075	589	6	750	0.45	1.29	140	190	514	229	262	30	17	120	247	220	129	222	M25*1.5	71	SIZE60	B
MVE1300/075	941	9	750	0.56	1.86	155	225	556	272	295	40	22	141	267	250	140	235	M25*1.5	99.8	SIZE70	B
MVE2100/075	1468	15	750	1	2.81	155	255	708	302	318	35	23.5	147	295	273	200	264	M32*1.5	150.4	SIZE75	B
MVE3100/075	2137	21	750	1.4	3.79	180	280	683	332	360	37	26	168	345	304	170	310	M32*1.5	212.2	SIZE80	B
MVE3800/075	2633	25	750	1.75	4.5	180	280	733	332	360	37	26	168	345	304	195	310	M32*1.5	230.2	SIZE80	B
MVE4200/075	2920	30	750	2.1	5.26	200	320	688	378	410	49	28	200	422	325	160	378	M32*1.5	284.5	SIZE85	B
MVE5300/075	3660	35	750	2.7	7.26	200	320	688	378	410	49	28	200	422	325	160	378	M32*1.5	305	SIZE85	B
MVE6500/075	4510	45	750	3.65	9.93	200	320	788	378	410	49	28	200	422	325	210	378	M32*1.5	324.2	SIZE85	B

PEACO-P-VBE

Peaco Support provides P-VBE series of vibration motors with large size are widely used in large mine, whose eccentric blocks are easy to adjust, with multiple voltages and power for options. They have the following features:

1. The vibration motors adopt pure copper enameled wires, full copper winding with high temperature resistance and stators with VPI (vacuum pressure impregnation) to ensure insulation level.
2. The special vibration motors are equipped with extra-thick nodular cast iron shell, featuring fast heat dissipation, low temperature rise and shock resistance.
3. The housing of the vibration motors is precision casting. The edge of the end cover is equipped with an o-shaped sealing ring and a fully enclosed structure design, which are dust-proof and moisture-proof.
4. Such vibration motors come with special protective cover of power cord outlet to prevent the cable line from being damaged by long-term vibration.
5. The fixed cast junction box makes the P-VBE vibration motors have strong waterproof, insulation and safety performance.
6. Peaco Support P-VBE series of vibration motors are widely used in electric power, building materials, coal, mining, metallurgy, chemical, light industry, casting and other industries, especially used for large mines as one of the representatives of special vibration motors.



3 Phase 2 Pole (Dimension A-D Unit: mm)

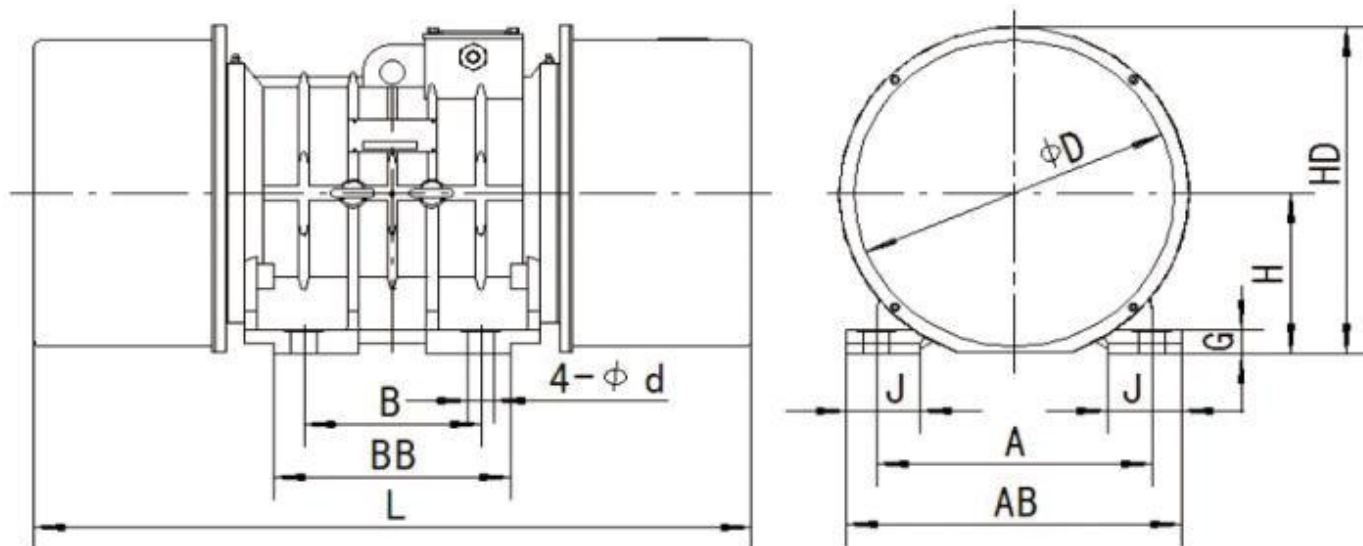
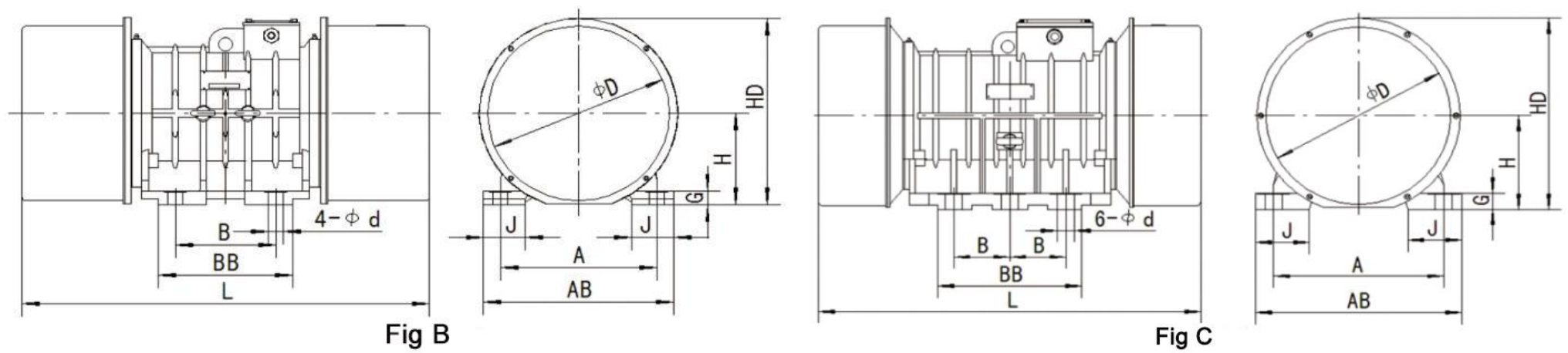


Fig B

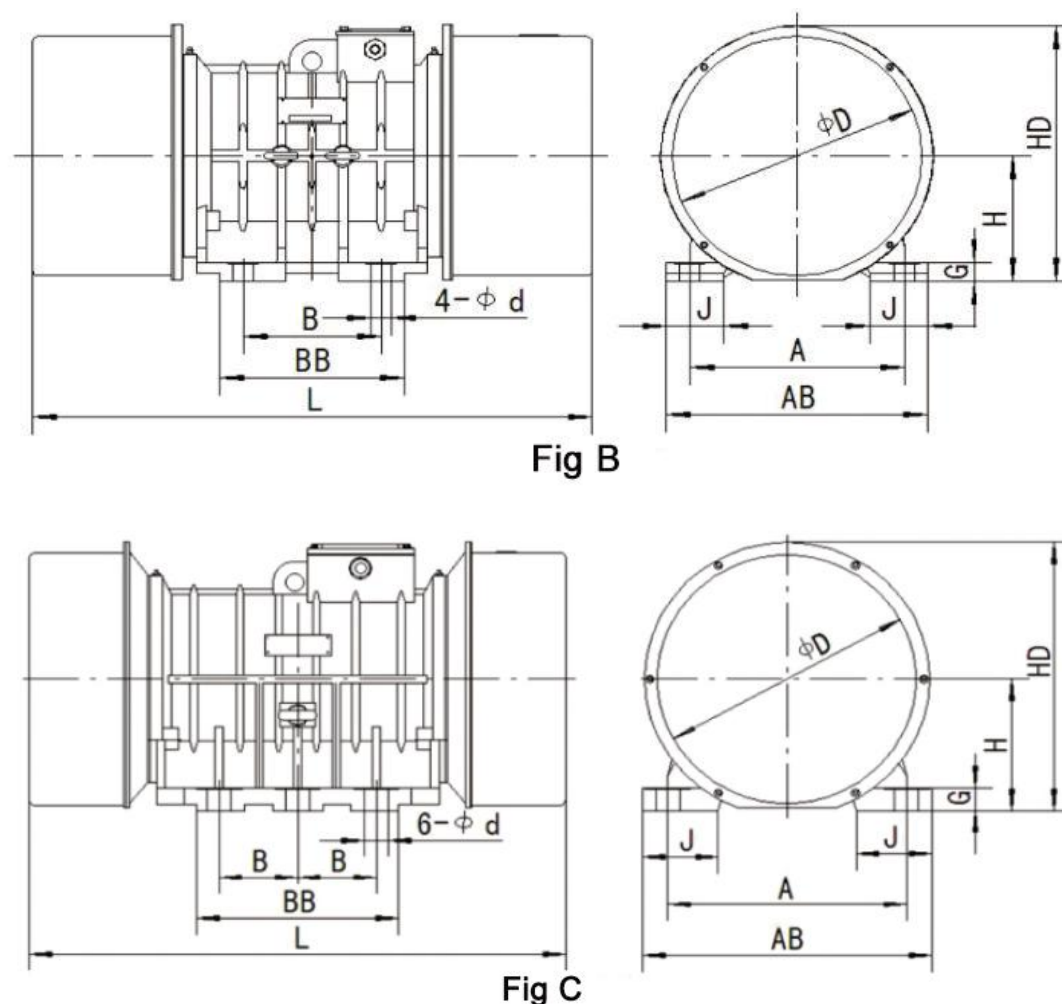
Type	Force kn	Speed rpm	Power kw	Current A	A	B	AB	BB	L	G	H	HD	J	d	D	Bolt mm	Weight kg	Fig
VBE-8-2	8	2850	0.55	1.29	170	120	205	162	335	19	98	235	43	17	180	M16	33	B
VBE-10-2	10	2860	0.75	1.7	170	120	205	162	350	19	98	235	43	17	180	M16	35	B
VBE-15-2	15	2900	1.2	4.3	190	140	230	200	430	25	123	271	50	17	230	M16	46	B
VBE-18-2	18	2900	1.5	5.27	190	140	230	200	450	25	123	271	50	17	230	M16	52	B
VBE-20-2	20	2900	1.8	6.25	190	140	230	200	470	25	123	271	50	17	230	M16	55	B
VBE-25-2	25	2900	2	6.92	190	140	230	200	470	25	123	271	70	17	230	M16	60	B
VBE-30-2	30	2900	2.2	4.5	255	155	300	250	540	33	160	330	70	25	304	M24	97	B
VBE-40-2	40	2900	2.7	5.37	255	155	300	250	540	33	160	330	70	25	304	M24	110	B
VBE-50-2	50	2900	3.5	6.85	255	155	300	250	540	33	160	330	70	25	304	M24	118	B

3 Phase 4 Pole (Dimension A-D Unit: mm)



Type	Force kn	Speed rpm	Power kw	Current A	A	B	AB	BB	L	G	H	HD	J	d	D	Bolt mm	Weight kg	Fig
VBE-8-4	8	1400	0.4	1.07	170	120	205	162	410	19	98	235	43	17	180	M16	44	B
VBE-10-4	10	1400	0.45	1.18	170	120	205	162	425	19	98	235	43	17	180	M16	46	B
VBE-15-4	15	1435	0.75	1.8	190	140	230	200	455	25	123	271	50	17	230	M16	63	B
VBE-18-4	18	1430	0.9	2.05	190	140	230	200	510	25	123	271	50	17	230	M16	73	B
VBE-20-4	20	1430	1	2.26	190	140	230	200	515	25	123	271	50	17	230	M16	74	B
VBE-25-4	25	1450	1.25	2.75	225	155	278	205	505	33	143	302	67	22	270	M20	100	B
VBE-30-4	30	1435	1.5	3.19	225	155	278	205	525	33	143	302	67	22	270	M20	105	B
VBE-38-4	38	1440	1.8	3.82	255	155	300	250	580	38	165	333	70	23.5	304	M22	129	B
VBE-40-4	40	1437	1.85	3.84	255	155	300	250	580	38	165	333	70	23.5	304	M22	136	B
VBE-52-4	52	1460	2.2	4.75	280	180	330	240	610	33	173	351	70	26	324	M24	164	B
VBE-65-4	65	1465	3.2	6.73	320	200	390	270	600	36	203	417	90	28	390	M27	232	B
VBE-80-4	80	1460	5.5	11.2	320	200	390	270	680	36	203	417	90	28	390	M27	285	B
VBE-100-4	100	1460	6.3	12.63	380	125	460	320	735	38	218	445	120	38	418	M36	310	C

3 Phase 6 Pole (Dimension A-D Unit: mm)



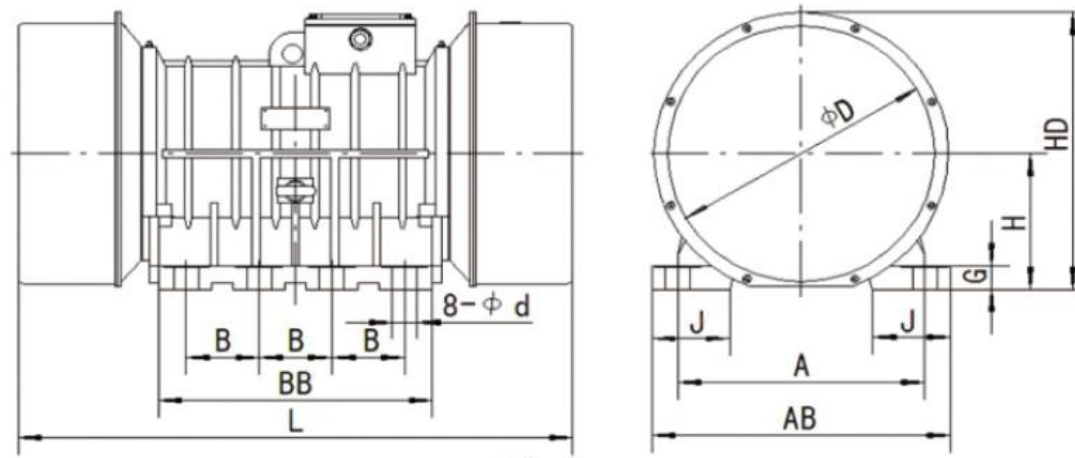


Fig D

Type	Force kn	Speed rpm	Power kw	Current A	A	B	AB	BB	L	G	H	HD	J	d	D	Bolt mm	Weight kg	Fig
VBE-3-6	3	940	0.25	0.81	170	120	205	162	385	19	98	235	43	17	180	M16	38	B
VBE-5-6	5	950	0.37	1.17	170	120	205	162	450	19	98	235	43	17	180	M16	45	B
VBE-8-6	8	970	0.45	1.34	190	140	230	200	428	25	123	271	50	17	230	M16	64	B
VBE-10-6	10	970	0.55	1.63	190	140	230	200	448	25	123	271	50	17	230	M16	71	B
VBE-15-6	15	970	0.75	1.99	225	155	278	205	520	33	143	302	67	22	270	M20	100	B
VBE-18-6	18	965	1.3	3.31	225	155	278	205	565	33	143	302	67	22	270	M20	110	B
VBE-20-6	20	965	1.5	3.66	225	155	278	205	585	33	143	302	67	22	270	M20	118	B
VBE-25-6	25	965	1.8	4.32	255	155	300	250	636	33	160	328	70	23.5	304	M22	144	B
VBE-30-6	30	960	2.2	5.25	255	155	300	250	658	33	160	330	70	23.5	304	M22	162	B
VBE-38-6	38	975	2.5	5.96	280	180	330	240	650	33	173	351	70	26	324	M24	181	B
VBE-47-6	47	960	2.9	6.77	280	180	330	240	730	33	173	351	70	26	324	M24	227	B
VBE-52-6	52	980	3.2	7.6	320	200	390	270	635	36	203	417	90	28	390	M27	256	B
VBE-65-6	65	980	3.6	8.46	320	200	390	270	675	36	203	417	90	28	390	M27	281	B
VBE-80-6	80	980	5.5	12.29	320	200	390	270	810	36	203	417	90	28	390	M27	350	B
VBE-100-6	100	980	7.5	16.46	380	125	460	320	854	38	218	445	120	38	418	M36	414	C
VBE-130-6	130	980	8.3	18.2	380	125	460	320	935	38	218	445	120	38	418	M36	468	C
VBE-160-6	160	975	10	20.85	480	140	570	510	960	45	270	540	120	45	490	M42	710	D
VBE-180-6	180	975	11	23.04	480	140	570	510	980	45	270	540	120	45	490	M42	750	D
VBE-220-6	220	980	16	33.03	520	140	610	510	996	45	297	592	130	45	542	M42	880	D

3 Phase 8 Pole

Type	Force kn	Speed rpm	Power kw	Current A	A	B	AB	BB	L	G	H	HD	J	d	D	Bolt mm	Weight kg	Fig
VBE-25-8	25	725	1.8	4.95	280	180	330	240	665	33	173	351	70	26	324	M24	231	B
VBE-38-8	38	720	2.7	6.75	320	200	390	270	675	36	203	417	90	28	390	M27	312	B
VBE-47-8	47	720	3.2	8.1	320	200	390	270	790	36	203	417	90	28	390	M27	340	B
VBE-52-8	52	720	3.7	9.09	320	200	390	270	810	36	203	417	90	28	390	M27	383	B
VBE-65-8	65	720	4.5	10.96	320	200	390	270	895	36	203	417	90	28	390	M27	417	B
VBE-80-8	80	730	5.5	13.78	380	125	460	320	980	38	223	450	120	38	418	M36	542	C
VBE-100-8	100	735	7.5	19.71	480	140	570	510	955	45	270	540	120	45	490	M42	712	D
VBE-130-8	130	735	9	23.05	480	140	570	510	1060	45	270	540	120	45	490	M42	805	D
VBE-160-8	160	735	11	26.93	520	140	610	510	1040	45	297	592	130	45	542	M42	897	D
VBE-180-8	180	735	13	31.38	520	140	610	510	1100	45	297	592	130	45	542	M42	960	D

PEACO-P-YZS

The large size P-VBE series of vibration motors are also widely applicable in large mine, used as the excitation source of all kinds of vibration machinery, which can meet different requirements of all kinds of vibration machinery, such as vibrating feeder, vibrating ore drawing machine, vibrating conveyor, vibrating screen, vibrating sand shaker, vibrating finishing machine, vibrating dryer and anti blocking device with silo vibration.

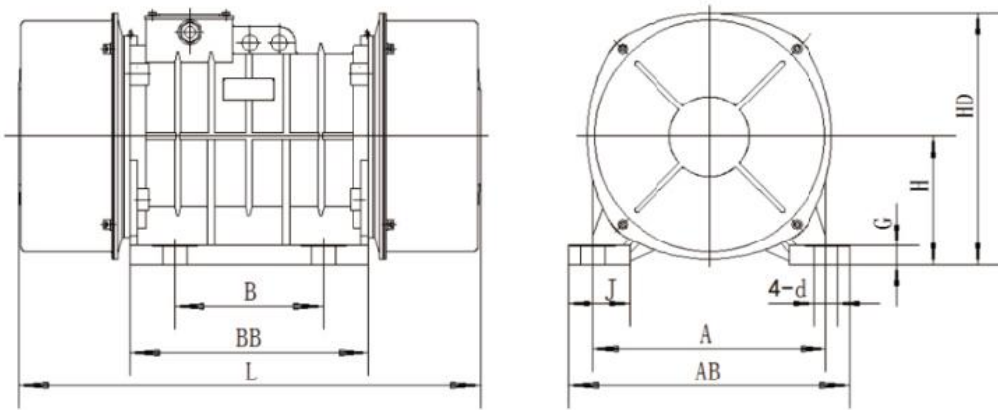


Fig A

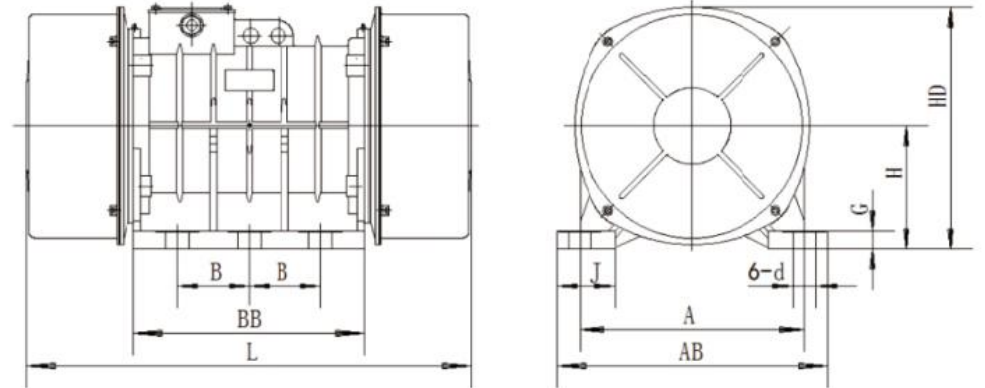


Fig B

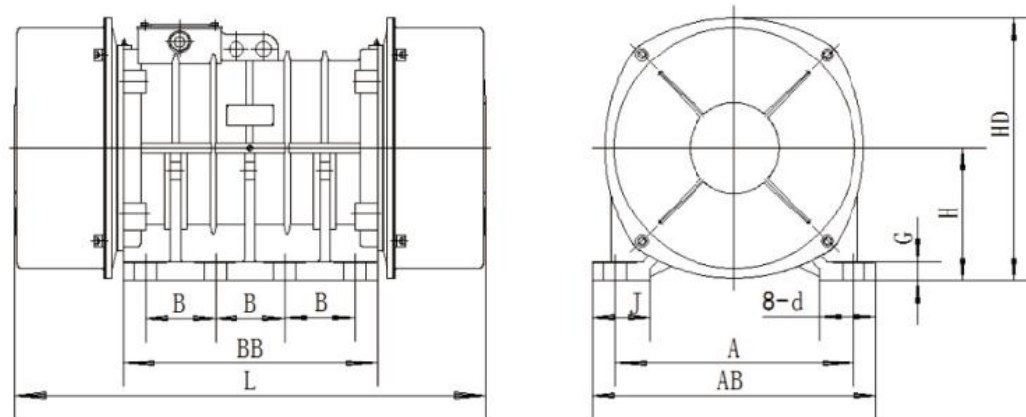


Fig C

3 Phase 2 Pole (Dimension A-L Unit: mm)

Type	Force kn	Speed rpm	Power kw	A	B	H	d	AB	BB	HD	G	L	Weight kg	Fig
YZS-10-2	10	3000	0.75	180	110	105	4-Φ18	210	160	225	18	365	26	A
YZS-15-2	15		1.1	220	140	120	4-Φ22	260	190	255	20	415	42	A
YZS-20-2	20		1.5	260	150	140	4-Φ26	310	230	305	25	450	61	A
YZS-30-2	30		2.2	310	170	162	4-Φ33	390	270	345	30	560	99	A
YZS-50-2	50		3.7	350	220	200	4-Φ39	420	350	400	30	595	158	A
YZS-75-2	75		5.5	380	125	215	6-Φ39	450	400	430	32	700	246	B
YZS-100-2	100		7.5	380	125	215	6-Φ39	450	400	430	32	700	288	B

3 Phase 4 Pole

Type	Force kn	Speed rpm	Power kw	A	B	H	d	AB	BB	HD	G	L	Weight kg	Fig
YZS-10-4	10	1500	0.55	220	140	120	4-Φ22	260	190	255	20	415	40	A
YZS-15-4	15		0.75	260	150	140	4-Φ26	310	230	305	25	450	67	A
YZS-20-4	20		1.1	260	150	140	4-Φ26	310	230	305	25	450	72	A
YZS-30-4	30		1.5	310	170	162	4-Φ33	390	270	345	30	560	109	A
YZS-50-4	50		2.2	350	220	200	4-Φ39	420	350	400	30	595	175	A
YZS-75-4	75		3.7	380	125	215	6-Φ39	450	400	430	32	700	286	B
YZS-100-4	100		6.3	440	140	240	6-Φ39	540	450	480	36	830	400	B

3 Phase 6 Pole

Type	Force kn	Speed rpm	Power kw	A	B	H	d	AB	BB	HD	G	L	Weight kg	Fig
YZS-3-6	3	1000	0.25	180	110	105	4-Φ18	210	160	225	18	365	30	A
YZS-5-6	5		0.37	220	140	120	4-Φ22	260	190	255	20	415	40	A
YZS-10-6	10		0.75	260	150	140	4-Φ26	310	230	305	25	450	71	A
YZS-15-6	15		1.1	310	170	162	4-Φ33	390	270	345	30	560	116	A
YZS-20-6	20		1.5	310	170	162	4-Φ33	390	270	345	30	560	122	A
YZS-30-6B	30		2.2	310	170	162	4-Φ33	390	270	345	30	620	149	A
YZS-30-6	30		2.2	350	220	200	4-Φ39	420	350	400	30	595	183	A
YZS-50-6B	50		3.7	350	220	200	4-Φ39	420	350	400	30	655	218	A
YZS-50-6	50		3.7	380	125	215	6-Φ39	450	400	430	32	700	302	B
YZS-75-6	75		5.5	380	125	215	6-Φ39	450	400	430	32	740	320	B
YZS-100-6	100		7.5	440	140	240	6-Φ39	540	450	480	36	830	421	B
YZS-135-6	135		9.0	480	140	280	8-Φ39	710	770	640	45	1000	630	C
YZS-165-6	165		11	480	140	280	8-Φ39	710	770	640	45	1000	700	C

3 Phase 8 Pole

Type	Force kn	Speed rpm	Power kw	A	B	H	d	AB	BB	HD	G	L	Weight kg	Fig
YZS-10-8	10	750	0.75	310	170	170	4-Φ33	400	270	365	57	505	125	A
YZS-20-8	20		1.5	350	220	200	4-Φ39	442	313	425	52	600	195	A
YZS-30-8	30		2.2	380	125	220	6-Φ39	480	350	465	67	670	330	B

Applications

